

DIOCESE OF
LAKE CHARLES



Return to the

Lord

A CAMPAIGN FOR OUR FUTURE

How can I Return to the LORD for all the good he has done for me?

I will raise the cup of salvation and call on the name of the LORD.

I will pay my vows to the LORD in the presence of all his people.

Dear in the eyes of the LORD is the death of his devoted.

LORD, I am your servant, your servant, the child of your maidservant; you have loosed my bonds.

I will offer a sacrifice of praise and call on the name of the LORD.

I will pay my vows to the LORD in the presence of all his people,

In the courts of the house of the LORD in your midst, O Jerusalem.

Hallelujah!

PSALM 116, VERSES 12 – 19

He Plants
For Those To Come

Our Campaign Goal

We will grow together, as one diocesan faith family, to ensure we *Return to the Lord* our future generations.

PRIESTS

PARISHES

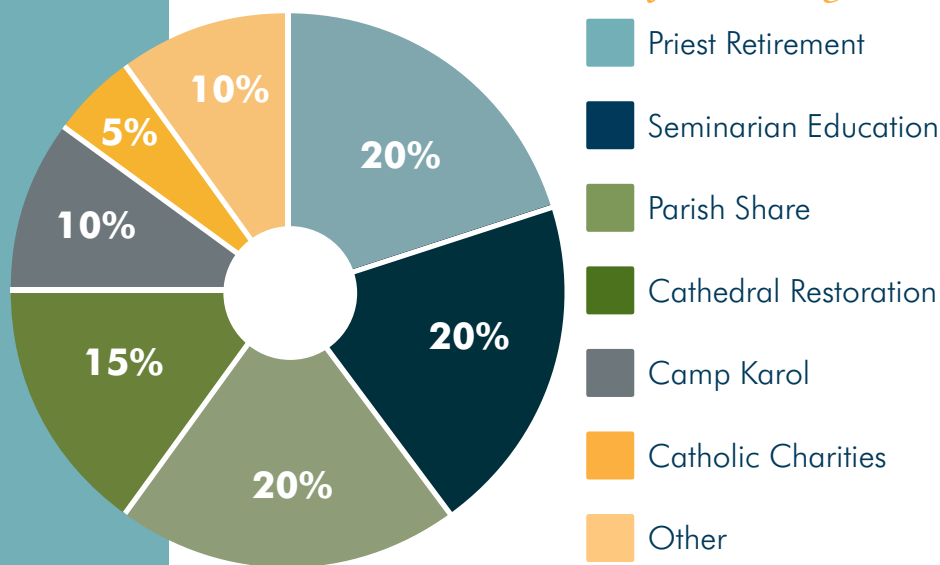
MINISTRIES

\$16,000,000 CAMPAIGN

WHAT WILL BE DIFFERENT AFTER THIS CAMPAIGN?

- Our Priest Retirement Fund will be in a stronger position to help **provide a dignified retirement for our priests.**
- We will **increase our ability to ensure a vocation to the priesthood** is an affordable option for quality young men called into the Lord's service.
- Our parishes will have invested in their facilities and programs to **improve the quality of everyone's Catholic experience.**
- The foundation and symbol of our faith in this region, the **Cathedral of the Immaculate Conception**, will be **strengthened and fortified** to stand proud and vibrant for another 100 years.
- We will construct Camp Karol of Saint Charles Center in order to have the ability and resources to pass on a **dynamic faith to our children** for generations to come.
- Greater Southwest Louisiana will witness our faith in action when we **better answer Jesus' call to serve** those most in need in our communities.

Where will the funds go?



Other: 10 percent of the campaign funds will be marked for "unfulfilled intentions" – those pledges that are not 100 percent fulfilled within the pledge period. This ensures that funding to all other campaign goals will not be reduced. Additionally, it will provide the costs of running the campaign, which involves design of all the marketing materials, printing, postage, professional assistance, grant writing, travel, meals and events.

Bishop's Guarantee: Any funds raised over the \$16 million goal that are not designated to a specific program will be allocated by the bishop and Diocesan Finance Council to the area of the campaign where the need is greatest. Campaign funds will not be used for anything beyond what is set forth in this document.

Support Our Priests

We have an aging priest population. That leaves us with two clear, moral obligations:

- Take care of our retired priests
- Focus on encouraging our priestly vocations

PRIESTS BY THE NUMBERS:

34: Diocesan Priests

14: Retired priests

70: Minimum Priest
Retirement Age

53: Average Age of All
Active Priests

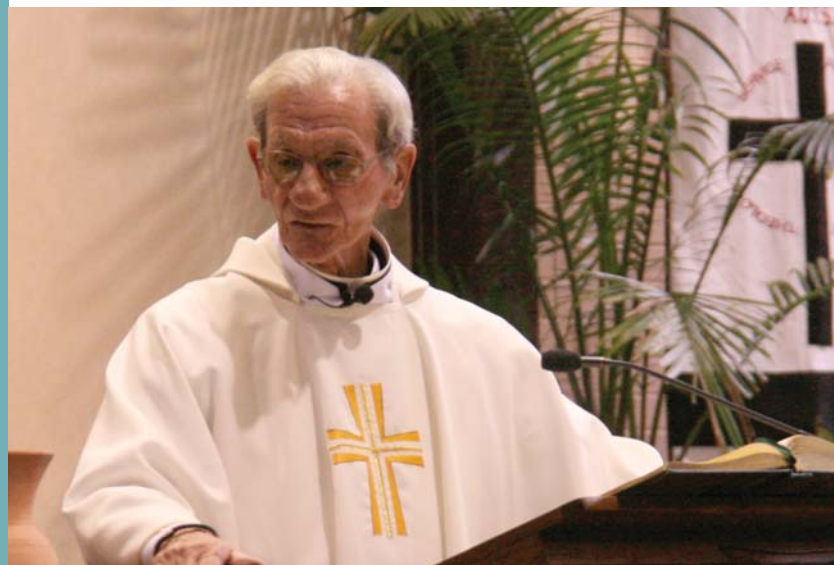
12 of 34: Diocesan Priests
Expected To Retire in
the Next Ten Years

15: Seminarians Enrolled



"Our devoted priests have given their lives to help save our souls. Now it is our privilege to care for them."

Jack & Mandy Robichaux
General Chairs



Strengthen the Priest Retirement Fund \$3,200,000

The Priest Retirement Fund provides a dignified retirement for our priests who have spent their lives in service to God. Twelve more priests are expected to retire in the next 10 years. This represents 35 percent of our active, diocesan priests. This campaign will ensure that we meet our ongoing obligation to our current and future priests.

WHO IS COVERED BY THE PRIEST RETIREMENT FUND?

The fund covers only priests who have been incardinated into the Diocese of Lake Charles. Religious order priests receive retirement benefits from their religious communities.

HOW MUCH IS IN THE FUND?

There was \$1,447,925 as of December 31, 2015.

WHY IS IT NOT FULLY FUNDED?

There are four main factors that contributed to the retirement fund being lower than projected. Those are:

- Priests are living longer.
- Parish assessments were conservative.
- Healthcare costs continue to increase.
- During the recent economic downturn, investments yielded lower-than-projected returns.

DO PRIESTS PAY INTO SOCIAL SECURITY?

Yes, the I.R.S. classifies priests as self-employed. Therefore, our priests pay their own social security.



Assist Priestly Vocations through the Seminarian Education Fund \$3,200,000

The Seminarian Education Fund fuels the diocese's efforts to attract quality young men to the religious life. Recent efforts by the diocese have been successful in recruiting a record-breaking number of 15 men to the seminary. For our diocese, that positive trend appears likely to continue. However, higher numbers of students mean higher costs for the diocese. Funds of the campaign will be invested so that interest earned can be used to help cover the \$34,375 annual average cost of educating and forming our future priests.

HOW DOES THE DIOCESE SUPPORT SEMINARIAN STUDENTS?

College level seminarians receive a 55 percent scholarship from the diocese and are responsible for the other 45 percent. Seminarians in the Major Theologate, as well as Pre-Theologians, receive 100 percent support from the diocese that covers tuition, books, room and board.

HOW MUCH IS IN THE FUND?

There was \$1,761,781 as of December 31, 2015.

HOW DO SPECIAL COLLECTIONS ASSIST SEMINARIANS?

The diocese uses the annual special vocations collection to meet current, ongoing costs. Special offertories and interest from seminarian burses make up 7 percent of the annual costs. The remainder is covered from the diocesan operating budget. The plan for this campaign is to build up the Seminarian Education Fund to generate additional interest income to meet the growing costs of educating added seminarians.

WHO OVERSEES BOTH OF THESE FUNDS?

The plans are governed by the Diocesan Finance Council appointed by Bishop Provost and comprised of priests and lay experts. The plans are audited by a third-party annually.

2016 DIOCESAN FINANCE COUNCIL:

Monsignor Harry Greig, *Chair*
Deacon Glen Bertrand
Father Ruben Buller
Judge Charlotte Bushnell
Michael Gillespie
Senator Ronnie Johns
Steve Lacy

Edward Orgeron
Rick Oustalet
Marie Prejean
Robert Piper
Deacon George Stearns
Monsignor Daniel Torres,
Vicar General



Invest In Our Parishes

Our parishes are the cornerstones and gathering places for our faith community. Likewise, the Cathedral of the Immaculate Conception is a symbol of our unity of faith throughout the wider community.

Restore Our Cathedral \$2,400,000

The Cathedral of the Immaculate Conception is a beautiful, nationally-registered historic landmark. As the 100-year anniversary of the building passed, the Diocese of Lake Charles initiated a comprehensive study to examine all facets of the building. The study found multiple items that, if left unaddressed in a timely and proper manner, would cause more costly repairs or even irreversible damage.

The cathedral is the one parish building that belongs to every member of the diocese. To ensure that our cathedral proudly stands for many generations to come, the diocese intends to address the following necessary repairs, starting with these priorities.

“Our Cathedral is used, loved and appreciated by everyone throughout the diocese. Lance and I got married there in 1991 and our daughter will be married there later this year. So many wonderful memories already and so many more to come for all Catholics! We all need to do our part to keep the cathedral beautiful and structurally sound.”

Lance & Kelly Mudd
General Chairs

The Diocesan Building Commission will determine the scope of work necessary.

Members include:

Deacon George Stearns, *Chair*

V.J. Abate

Harvey Bessette

Father Ruben Buller

Jerry Filo

Kimberlee Gazzolo

Father Timothy Goodly

Frank Miller

Willie Moreno

Edward “Buzzy” Ribbeck, *Cathedral Restoration*

Ad Hoc Subcommittee Chair

C. Gayle Zembower

At the time of publication, no work has been put out to bid. Bids will follow standard diocesan construction protocols.



Then one day in the church chapel right outside of Assisi, he heard the invitation of Jesus: *"Francis, go rebuild my Church, which you see is falling into ruins."* "Yes!" said Francis. *"This is what I want, this is what I long for with all my heart."*

FOUNDATION - DRAINAGE, MECHANICAL & ELECTRICAL ISSUES BELOW FLOOR LEVEL:

- Update electrical circuitry and replace damaged components;
- Update or repair plumbing;
- Provide positive drainage to prevent standing water;
- Address exposed concrete reinforcement deterioration that will cause weakening and eventual failure in the flooring;
- Bring up to current building codes and fix past termite damage;
- Repair or replace damaged air-conditioning duct work and insulation.

WEATHER-PROOFING THE OUTSIDE FACADE:

The exterior masonry will be cleaned, mortar joints repointed and the entirety waterproofed, so that the structure is water-tight. This is a necessity to prevent further damage of the interior walls.

FENESTRATION (WINDOW FRAMES/GLASS/ STAINED LEADED GLASS, DOORS):

These openings, mainly window frames and glass, will be refurbished, where required, to prevent further corrosion of the frames that support and contain the leaded stained glass.

REFURBISHING THE INTERIOR PANELING:

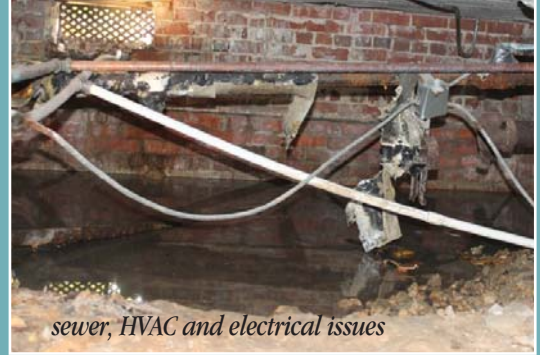
Like many old buildings, the cathedral was not designed for modern heating and air conditioning (HVAC). Moisture absorption was not considered when the acoustical sponge-like panels were added years after the initial construction. Once the foundation and outside structure are dealt with, the inside acoustics will be improved by replacing paneling with something that provides harmony with the environment and fits the cathedral's architectural theme. Should any asbestos mitigation be needed, it will also be done at this time.

** In addition to the above restoration work, the diocesan building commission will provide ongoing checks and maintain a robust record-keeping system that will ensure continuity over each pastor and building committee to promote proper care and longevity for future generations.*

** After these top priorities are completed, any remaining funds would be dedicated to improving energy efficiency to assist with reducing costs, such as upgrading the HVAC system and/or addressing cracks in the walls.*

** With these campaign funds completing the building necessities, the Cathedral parish will use their parish share to determine any other enhancement projects to the church that they would like to see completed.*

If you would like to review the findings of the structural study, please visit campaign.lcdiocese.org



sewer, HVAC and electrical issues



basement water intrusion



masonry repointing



window frame rust and corrosion





Parish Share* \$3,200,000

As part of this campaign, 20 percent of the funds raised by the parish will be returned for specific needs such as reducing parish debt, completing capital improvement projects or growing parish endowments.

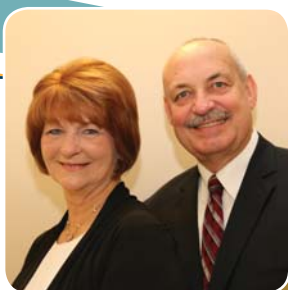
These funds would be distributed semiannually to the parishes, based on cash received, throughout the pledge period.

Parishes will determine how to use these funds prior to the campaign kicking off at their parish.

The portion of funds returned to the parish increases when the parish exceeds its campaign goal.

WHEN A PARISH RAISES:	THE PARISH RECEIVES:
Up to 100% of goal	20% back
Over 100% of goal	80% back

**Should a parish not wish to participate in the parish-share feature of the campaign, they can designate their 20 percent to one of the other campaign goals.*



"We are all one diocese. This campaign presents a great opportunity for each parish to receive the fruits of its generosity, enabling them to address local needs in the process."

John & Arlene Bostick
General Chairs



Strengthen Our Ministries

Expanding the Services of Catholic Charities \$800,000

To follow the example of Jesus, we must serve the communities and neighbors that need our help the most. Our strategic priority is to collaborate with parishes to identify those in each community facing hardship and respond with the appropriate services that are lacking. Catholic Charities of Southwest Louisiana plans to enhance its Diocesan Social Ministry Program to offer education on the services that are available in order to connect the right services to those who qualify. The immediate plan is to:

- Remodel warehouses to increase storage capacity for disaster relief services and outreach;
- Purchase new refrigeration equipment to increase cold storage capacity;
- Upgrade vehicles to use as mobile food banks to better serve parishes;
- Create an endowment to help sustain operations and increase staff.



FAMILIES SERVED BY CATHOLIC CHARITIES (2015)

675/month: Average of those served canned, frozen & fresh fruits & vegetables

641: Beat the Heat & other utility assistance programs

953: Rent/mortgage assistance to avoid homelessness

70: Funeral assistance

135: Employment assistance

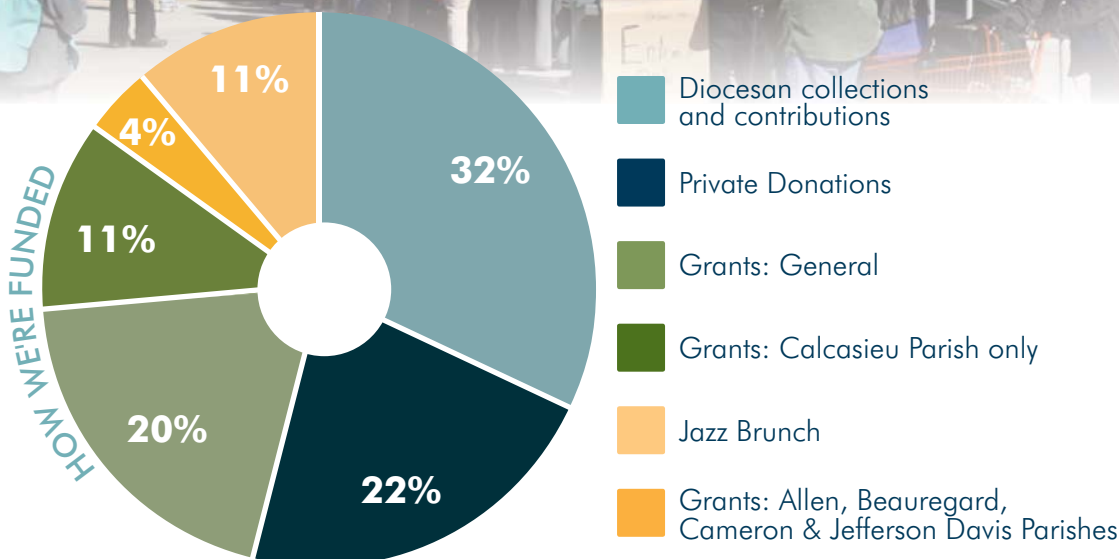
67: Transportation assistance

113: Adopt-A-Senior Christmas Program



DID YOU *know?*

Catholic Charities of Southwest Louisiana follows a strict vetting procedure to make sure those receiving services truly need it and are not receiving duplicated services from the government or other charities. This maximizes our aid to the neediest in our communities and ensures our help is "a hand up, not a hand out" to provide an opportunity for a new beginning.



"Catholic Charities works hand in hand with parishes to serve the poor and evangelize by sharing the good news of the gospels."

Joel & Lisa Oustalet
General Chairs



Catholic Charities' scope of work is guided by government and foundation grant rules which determine the geographic area of operation. Funds from this campaign will help expand the reach of services.

Camp Karol of Saint Charles Center

\$1,600,000

“Dear young people, let yourselves be taken over by the light of Christ, and spread that light wherever you are.”

— Saint Pope John Paul II

Every generation desires that the values and beliefs essential to their moral and spiritual well-being are handed on to the next generation. This is one of the primary ways we keep our faith alive, not only in our current day, but into the future. This will be the fundamental mission of Camp Karol of Saint Charles Center.

Over the past 20 years, the Saint Katharine Drexel Conference Center of Saint Charles Center has satisfied some of these essential activities. Through the hard work of many youth ministers and pastors in our area, we must now plan for growth.

Saint Charles Center intends to expand its facilities and broaden its youth ministry programming. By the grace of God, **89 acres of additional property is now available to us, conveniently located near our current facilities along Sam Houston Jones Parkway in Moss Bluff to help us achieve our mission.**

The design of Camp Karol will be tailored to a holistic spirituality, appealing to the mind, body and soul of young retreatants. The experience of “getting away” to the sacred space of Camp Karol for serenity and renewal, as well as personal challenge and growth, will be a seed of faith we will plant early in the lives of our young people. With this experience, as they move into adulthood, they will feel comfortable returning to Saint Charles Center for ongoing spiritual support at a place where they might rediscover life’s meaning in quiet reflection as future retreatants, as so many of our adults have in recent years.



“

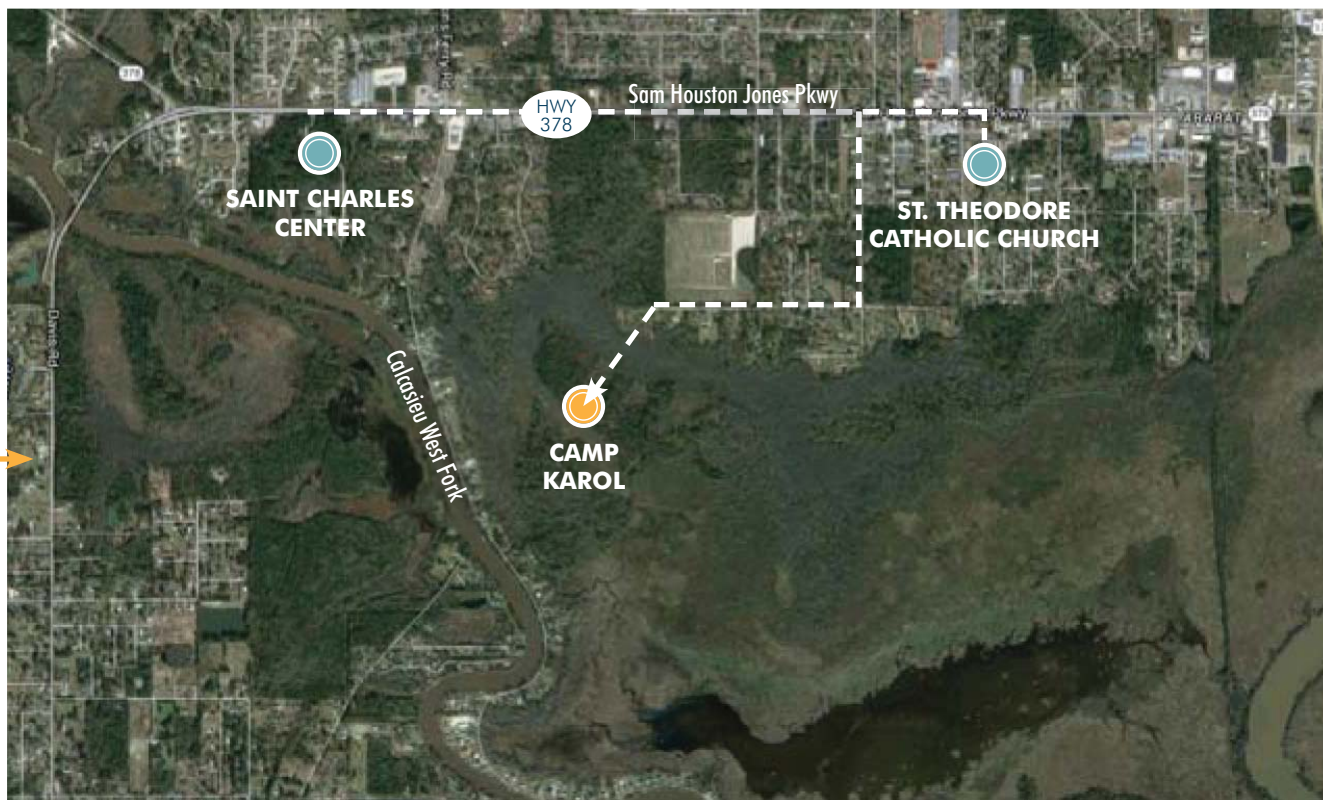
Having the proper facilities will attract our young people to spend more time with one another in a fun, Catholic environment. Someday folks will share that they met their lifelong friends, their spouse or answered God’s call to the celibate life at this camp.”

*Deacon Harold & Sheryl Nixon
General Chairs*



YOUTH PROGRAMS BY THE NUMBERS:

- 800+ Junior/High School students participating in parish programs across the diocese
- 2,100+ Youth who attend programs at Saint Charles Center and non-diocesan retreat facilities
- \$100,000+ Annual cost for diocese to send youth to non-diocesan retreat facilities



IS THIS RELATED TO THE PREVIOUS CAMP KAROL PROJECT AT BEAR ISLAND?

After 10 years of independent effort, the Board of Directors for the Bear Island Catholic Youth Camp and Retreat Center voted in November 2015 to donate the land, assets and equipment to the Diocese of Lake Charles.

Their board felt this capital campaign was the appropriate time to allow the diocese to take over completing and operating the project. The vision to provide area youth a dynamic spiritual experience remains unchanged.

The diocese is very appreciative of the work done and the opportunity for us to turn the original vision into reality.

In order to complete the project and begin operations as quickly as possible, Bishop Provost has asked Father Whitney Miller to oversee the effort under the Saint Charles Center.

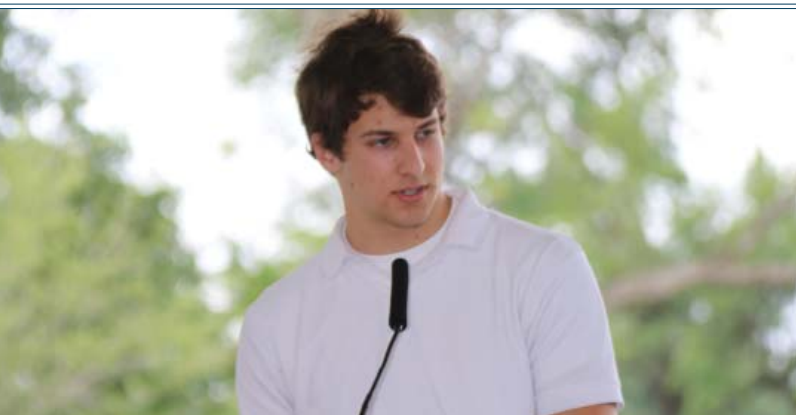
WHAT IS IN A NAME?

Camp Karol is inspired by Saint Pope John Paul II (born Karol Jozef Wojtyla) who consistently reached out to young people across our globe and recognized the vital role they play in the life of the church. Camp Karol pays tribute to this legacy by creating a resource for all of our parishes to serve our youth.



Separate, but Together...to Strengthen

The Bishop's Services Appeal (BSA) will continue during the *Return to the Lord* Capital Campaign to provide annual, operating support to our important ministries, offices and programs.



DID YOU *know?*

The Diocese of Lake Charles has the lowest average parish assessments and the lowest appeal goal of any diocese in the State of Louisiana.

HOW IS THE BSA AND PARISH ASSESSMENT DIFFERENT FROM THE RETURN TO THE LORD CAPITAL CAMPAIGN?

The BSA and parish assessments provide a base level of funding that allows our ministries, offices and programs to do their good work from year to year. The *Return to the Lord* Capital Campaign focuses on long-term, strategic priorities that can only be addressed through an extraordinary effort. Together, the two efforts will strengthen our parishes and ministries this year and for years to come.

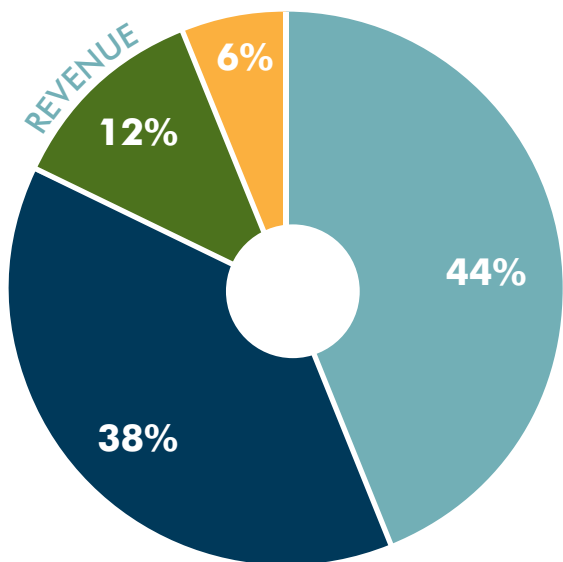
WHERE DO THE BSA AND ASSESSMENT FUNDS GO?

Parish assessments in 2016-2017 will continue to be 13 percent of accessible parish revenue. To meet our annual budget, parishes will also be asked to provide \$800,000 as part of the 2016-2017 BSA. Your BSA gifts and the parish assessment payments go directly to support many ministries and efforts including:

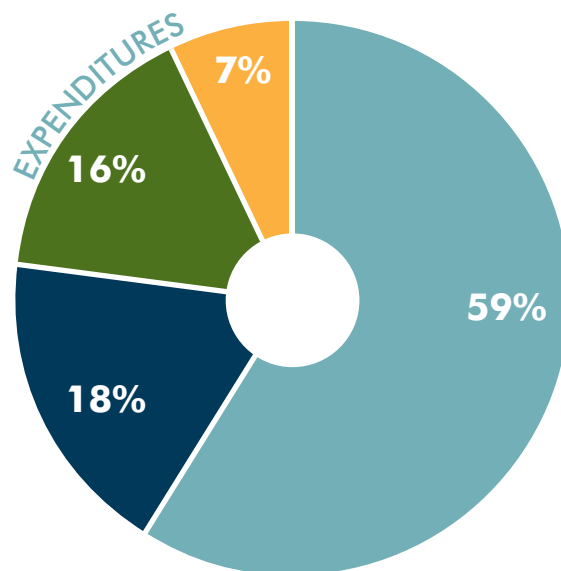
- Baptism, reconciliation, confirmation and marriage preparation;
- Training and curriculum support for parish religious education directors and youth ministers;
- Office of Catholic School's administration and annual principal and teacher training requirements;
- Bishop Scholarship Fund to students attending local Catholic schools;
- Center for Catholic Studies for those pursuing higher education;
- Seafarers' Center ministry to sailors who travel through the Port of Lake Charles;
- Newspaper and television communications;
- Diocesan counseling on a range of services including mental health, suicide prevention and marriage counseling.

WHY A CAMPAIGN?

The Diocese of Lake Charles keeps a sensible, transparent and balanced budget. As stewards of a nearly \$6.8 million operating budget, the diocese is just able to fund its ongoing missions and obligations. However, given that revenue the diocese receives is already earmarked each year, it is difficult for the diocese to invest in needed strategic priorities without an extraordinary effort. The goals of this campaign would take decades, if ever, to complete within the regular budget process. That is why your extraordinary support is needed. You can be confident that all funds the diocese receives, whether through the BSA, *Return to the Lord* Capital Campaign or any other gifts, will be used prudently and effectively as the diocese has an independent party conduct annual audits.



General Revenues BSA
Parish Assessments Grants



Ministry Activities General Operations
Retired Priests Communications
Seminarians

Many Ways to Many Reasons to Give

Bishop Provost is calling on the entire diocese to make a gift to the *Return to the Lord* Capital Campaign which will support our priests, parishes and ministries. Your support to this capital campaign, through your choice of payment options, will impact the future of the Diocese of Lake Charles for years to come. Pledges are commitments made in good faith, but are not legally binding. Your commitment can be fulfilled through monthly, quarterly, semiannual or annual installments. You may benefit from such gifts with a charitable deduction on your tax return.

CASH OR CHECK

The most common method of making a pledge is to contribute with cash or check payments. **Checks should be made payable to Diocese of Lake Charles with *Return to the Lord* or *Capital Campaign* in the memo line.**

CREDIT CARD OR ELECTRONIC FUND TRANSFER (EFT)

The second most common method of making a pledge is to contribute through automatic payments by credit card or allowing the diocese to withdraw funds directly from your checking or savings account. Much like paying your utilities and other monthly bills online, this makes it easy on you by saving you time and postage. Additionally, when you pay with credit card you may also receive “reward points” for your charitable giving, depending on your credit card. Please include a voided check with your pledge card if paying by EFT.

There are many other ways of giving which can accommodate your current circumstances. Please discuss with your family and financial advisor on a plan that is best for you. Some examples include:

LEAVE A GIFT IN YOUR WILL

A quick and easy way to make a lasting impact is to leave a gift to the diocese for the *Return to the Lord* Capital Campaign in your will. You can even choose a specific program or area to be funded by your gift, such as priest retirement or support for Camp Karol. One popular method of planned giving is to think of the church as an additional heir. For example, if a donor has four children, they would divide their estate in five parts, one each for the children and the church.

DONATE STOCKS, BONDS OR MUTUAL FUNDS

Charitable gifts of appreciated stocks, bonds or mutual funds that have been held for at least one year offer special tax advantages. Donors can receive a tax deduction for the full market value of the gift while avoiding capital gains tax on the appreciation. If a donor sells stock that has depreciated in value and gifts it to the campaign, he or she may receive a tax deduction for the charitable gift and a deduction for the capital loss.

DONATE REAL ESTATE

Donations of appreciated land or homes are entitled to an income tax deduction equal to the full value of the property, and the donor avoids being taxed on the capital gains. If debt-free property is donated, the gift is deductible at the property's appraised value. It may even be possible for a donor to gift property now, but still maintain the right to use the property. The benefit to making a donation now, rather than later in your will, is that you can realize an immediate income tax deduction for the gift.

DONATE LIFE INSURANCE YOU NO LONGER NEED

If you no longer need a policy for your estate or family's protection, you can make a gift now by assigning your policy to the diocese for the *Return to the Lord* Capital Campaign. Donors would be entitled to an income tax deduction for the replacement value of the policy, or the net amount of premiums you have paid, whichever is less. You also will be entitled to an income tax deduction for any premiums you pay on the policy after you assign it to the church. Moreover, you will have removed the death benefit proceeds from your estate that may otherwise be subject to estate tax.

DONATE A RETIREMENT PLAN YOU NO LONGER NEED

Naming the diocese for the *Return to the Lord* Capital Campaign as a primary or contingent beneficiary of a retirement plan, such as an IRA or 401(k), allows the diocese to carry out its mission and offers tax benefits to a donor's estate. Your plan administrator can help you designate the Diocese of Lake Charles as a beneficiary of your unused retirement plan.

DONATE COMMODITIES

Unlike cash, commodity contributions (such as donations of rice, soybeans or crawfish) can save income and self-employment taxes. The cost of raising the commodities is deducted on the Schedule F form, and income is not recognized on the donated commodity.

PLANNED GIFTS

Planned giving is the process of carefully selecting the best method and asset for making a charitable gift. Such a gift can enable you to take full advantage of the tax laws to accomplish your financial and charitable goals. Planned gifts can be made in the following ways:

- Bequests by will or living trust
- Charitable Remainder Trusts
- Charitable Gift Annuities
- Charitable Lead Trusts
- Beneficiary benefits from IRAs, pensions, or financial accounts



“We have been blessed,
and we feel this campaign
is the right opportunity to
give back.”

The Honorable Kent & Pat Savoie
General Chairs



"What shall I return to the Lord
for all His goodness to me?"

Psalms 116 expresses the desire
of the human heart to return
to God what is His due.

May God bless your generosity!
In one word-

+ Amen John Brown



Campaign Leadership

The Most Reverend Glen John Provost
Bishop, Diocese of Lake Charles

Rev. Msgr. James Gaddy
Chair, Pastor Advisory Council

GENERAL CHAIRS

John & Arlene Bostick
St. Pius X - Ragley

Jack & Mandy Robichaux
Immaculate Conception - Lake Charles

The Hon. Kent & Pat Savoie
St. Theresa of the Child Jesus - Carlyss

Lance & Kelly Mudd
St. Patrick - Sweetlake
Our Lady Queen of Heaven - Lake Charles

Dcn. Harold & Sheryl Nixon
Our Lady Queen of Heaven - Lake Charles
Sacred Heart of Jesus - Lake Charles

Joel & Lisa Oustalet
Our Lady Help of Christians - Jennings
Our Lady of the Lake - Lake Arthur

HONORIFIC CHAIRS

Warner & Earline Angelle
Winston & Ella Dartez-Williams
Rev. Msgr. Charles Dubois
Very Rev. Anthony Fontenot
David & Tammy[†] Grove
Sen. Ronnie & Michelle Johns
Very Rev. Marcus Johnson
Billy[†] & Carrie Navarre
Jack & Betty O'Reilly
Alfred & Margaret Palma
Robert & Eileen Piper
Clarence & Geneva Prudhomme
Marshall & Dr. Paula Simien
Joe & Janet Stoma
J. Michael & Melinda Veron
Sr. Mary Vianney-Walsh, R.S.M.
Charles D. & Joanna Viccellio

CAMPAIGN CABINET

Kevin & Shirley Berken
Very Rev. Ruben Buller
Grady & Kathy Conner
Rep. Mike & Daphne Danahay
Tony & Glynda Dougherty
Don & Monti Lloyd
Sonny & Cindy McGee
Rev. Whitney Miller
Dominic & Tina Monzelun
Jack & Sheila Reeves
Joel & Donna Richert
Rev. Jeff Starkovich
Rusty & Debbie Stutes
Clyde Terry
Scott & Michelle Trahan
Pete & Valerie Unkel
Jared & Jennifer Watson

PASTOR ADVISORY COUNCIL

Rev. Timothy Goodly
Rev. Msgr. Ronald Groth
Very Rev. Aubrey Guilbeau
Rev. John Huckaby
Rev. Keith Pellerin
Rev. Edward Richard, M.S.
Rev. Msgr. Daniel Torres
Rev. Alan Trouille

CAMPAIGN TEAM

Dcn. Glen Bertrand
*Director, Stewardship
& Development Office*
Stephanie Rodrigue
*Associate Director, Stewardship
& Development Office*
Steier Group
Campaign Counsel

[†]In memoriam

DIOCESE OF LAKE CHARLES
P.O. Box 3223
Lake Charles, LA 70602-3223
(337) 439-7400